



# 35 Roland Mount

Holbrooks, Coventry CV6 4HP



- \*\* SEMI DETACHED \*\*
- \*\* THREE BEDROOMS \*\*
- \*\* OFF ROAD PARKING \*\*
- \*\* GARAGE \*\*
- \*\* LEAN TO CONSERVATORY \*\*
- \*\* TWO YEAR OLD WORCESTER BOILER \*\*
- \*\* GREAT POTENTIAL \*\*
- \*\* CUL-DE-SAC LOCATION \*\*
- \*\* CLOSE TO ALL AMENITIES \*\*
- \*\* PERFECT FOR FIRST TIME BUYER / INVESTMENT \*\*

## Front Garden

## Entrance Hallway

## Lounge

16'1 x 14'1 (4.90m x 4.29m)

## Kitchen

9'5 x 8'7 (2.87m x 2.62m)

## Lean To Conservatory

11'11 x 7'7 (3.63m x 2.31m)

## First Floor Landing

## Bedroom One

12'6 x 10'1 (3.81m x 3.07m)

## Bedroom Two

7'6 x 5'6 (2.29m x 1.68m)

## Bedroom Three

10'4 x 7'1 (3.15m x 2.16m)

## WC

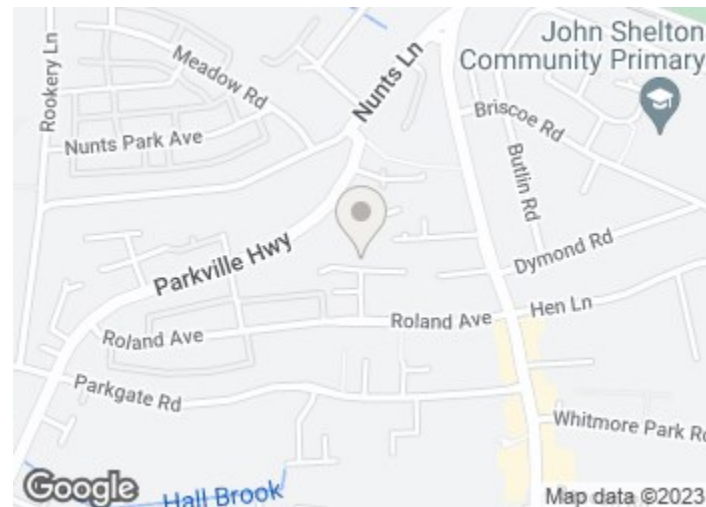
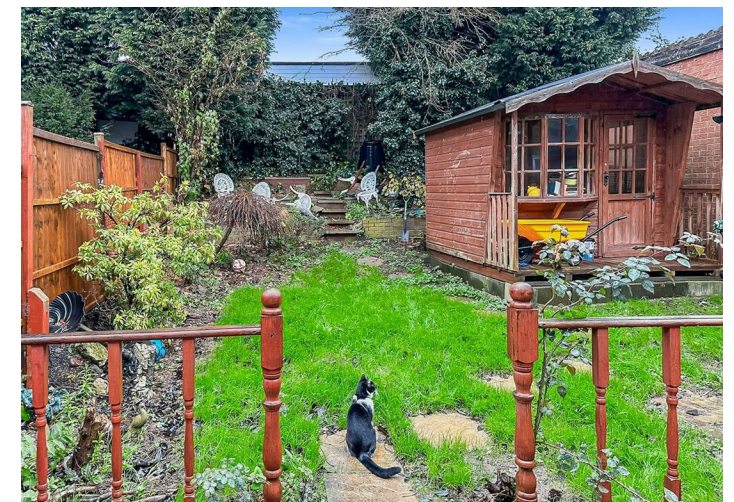
4'5 x 2'6 (1.35m x 0.76m)

## Family Bathroom

6'5 x 4'4 (1.96m x 1.32m)

## Rear Garden

## Garage



## Directions

